



User Manual

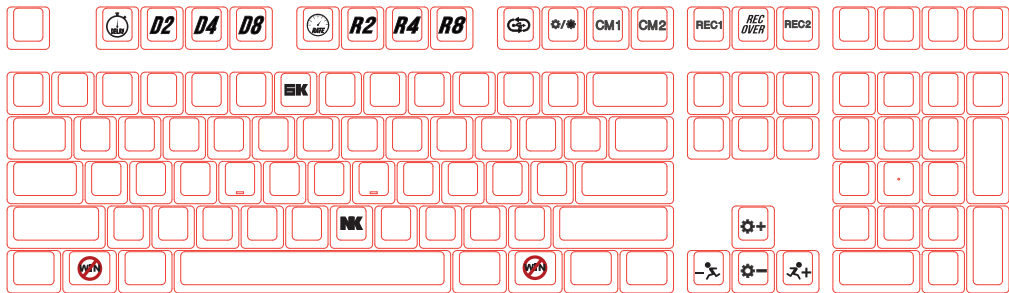
ZERO 3108

Ducky Zero 3108

背光版本

- 型号：DKZE1708S
- 结构：机械式结构
- 轴：Cherry MX 机械轴
- LED：单色LED灯
- 键帽材质：PBT 或 ABS

- 印字技术：二色成形 或 雷射雕刻
- 尺寸：440 x 140 x 41 mm
- 重量：1200g
- 产地：中国



▲ 确切规格每个地区可能会有不同，详细请问各地代理商。

USB输出字符加速功能

重点提示：

可以在USB接口中，调整键盘按键自原讯号输出的延迟时间，以及自原讯号的重复频率。进行USB输出字符加速设定时，只有在「Function Mode 模式」下才能进行切换，在一般模式下无法立即切换。

Fn +	F9	=	开启/ 关闭Function Mode模式	必须压住3秒钟切换
	F1		首字延迟1倍（预设）	调整USB Repeat Delay Time
	F2		首字延迟2倍	
	F3		首字延迟4倍	
	F4		首字延迟8倍	
	F5		字符重复频率1倍（默认）	调整USB Repeat Rate
	F6		字符重复频率2倍	
	F7		字符重复频率4倍	
	F8		字符重复频率8倍	

- 注：USB输出字符加速模式在不同游戏程序的设计方向下，可能会有不同表现结果，请依使用习惯自行调整。

记忆区域背光

重点提示：

Ducky Zero 3108背光版本采用Ducky背光专利功能「记忆区域背光」，提供2组给用户储存键盘上想要背光的区域设定，并且每个按键还能提供不同颜色储存。此外，也能让记忆区域背光的按键，显示循环变色效果。结合整把键盘背光功能，可以让键盘在特定模式下，也能显示记忆区域背光效果，增添键盘操作乐趣，也更贴近用户想要显示的背光键盘理想。

Fn + F11	CM1依序有不同动作： 第1段：依玩家设定的区域与颜色显示。 第2段：依玩家设定的区域循环变色显示。 第3段：OFF 关闭 CM1
Fn + F12	CM2依序有不同动作： 第1段：依玩家设定的区域与颜色显示。 第2段：依玩家设定的区域循环变色显示。 第3段：OFF 关闭 CM2
Fn + PrtSc	REC1，录制CM1设定
Fn + Pause	REC2，录制CM2设定
Caps Lock + (↑ 或 ↓)	调整按键亮度
Caps Lock + Scroll Lock	REC Over，完成录制

记忆区域背光

重点提示：

Ducky Zero 3108背光版本采用Ducky背光专利功能「记忆区域背光」，提供2组给用户储存键盘上想要背光的区域设定，并且每个按键还能提供不同颜色储存。此外，也能让记忆区域背光的按键，显示循环变色效果。结合整把键盘背光功能，可以让键盘在特定模式下，也能显示记忆区域背光效果，增添键盘操作乐趣，也更贴近用户想要显示的背光键盘理想。

- 操作重点提示：先调整喜欢的亮度，再选择要指定的按键。

操作过程：

1. 按住 Fn + PrtSc为设定CM1的设定，若按下Fn + Pause则是设定CM2的设定。
2. 当进入录制模式后，Caps Lock旁会显示当前要设定的显示颜色，可以透过Caps Lock + (↑或↓)进行亮度调整。当有喜欢的亮度出现时，直接在键盘上按下任意键，该键就会储存成喜欢的亮度。
3. 使用者可以重复上一个步骤，让Ducky Zero 3108背光版本在同一组区域背光设定中，不同按键能拥有多种不同灯色。
4. 当完成录制后，按下REC Over(Caps Lock + Scroll Lock)功能，结束录制。

注：◆ 当进入录制模式时，会先显示上一回储存的内容状态。

◆ 录制30秒无动作，不储存后自动关闭。

◆ CM1、CM2可以与其他灯光模式并存，CM1优先权较高(CM1>CM2)，分别控制个别区块。

背光模式

Fn + F10	第一次：100%全亮模式
	第二次：呼吸灯模式
	第三次：雨滴模式
	第四次：单点亮模式
	第五次：涟漪模式
	第六次：关闭所有灯光效果

- 以上模式可透过下列操作来进行细节调整。
 - ◆ Fn + ↑：增加灯光亮度。
 - ◆ Fn + →：降低速度。
 - ◆ Fn + ↓：降低灯光亮度。
 - ◆ Fn + ←：增加速度。
- 压住 Fn + F10 压住3秒钟关闭所有背光功能（含CM1、CM2）。

行动电源DEMO模式

适合插在行动电源或USB充电座提供灯光效果展示之用，不送出键盘讯号。

压住按键左Ctrl + 左Shift + Caps Lock，再输入电源。

此模式下无法记忆，每次使用皆须重新插拔。

回复出厂设定

左Windows键 + 右Windows键。

- 压住 Fn + F10 压住3秒钟关闭所有背光功能（含CM1、CM2）。

Windows Lock 功能

Fn + Alt + Win

- 压住3秒后，全键盘会闪3下表示开启/关闭。

N-Key Rollover/ 6-Key Rollover 功能

Fn + Alt + N	N-Key Rollover(预设)
Fn + Alt + 主键位区6	6-Key Rollover

- 压住3秒后，全键盘会闪3下表示设定完成。

Ducky Macro V2.0

特色说明：

- 1组原始键盘功能 · 5组玩家客制设定值(Profile)
- 可以设定(Macro)宏之按键 (2 layer)
 - ◆ 原始键盘上任一个按键 (Default layer)
 - ◆ Fn层按键 (Fn layer)
- 按键可以设定之功能
 - ◆ 多媒体功能键
 - ◆ 更换字符
 - ◆ 连续按键输出
 - 时间记录：
 - ▲ 呈现使用者按下的原始情况
 - ▲ 手动加入时间间隔
 - 宏执行状况：
 - ▲ 单击执行一次
 - ▲ 按下持续执行到使用按下第2次
 - ▲ 压下按键时持续执行

无法设定Macro功能的按键：

- Fn
- Fn + ESC
- Fn + F1~F12
- Fn + Print Screen
- Fn + Scroll Lock
- Fn + Pause
- Fn + 0~9
- Fn + Ctrl
- Fn + Alt
- Fn + windows
- Fn + ↑ ↓ ← →
- Fn + Space

Ducky Macro 基本快捷键功能

切换设定档 (Profile)

Fn +	1	=	切换至第1组设定	原始键盘功能(默认值)
	2		切换至第2组设定	可自定义按键 Macro功能
	3		切换至第3组设定	
	4		切换至第4组设定	
	5		切换至第5组设定	
	6		切换至第6组设定	

- 灯光效果：当切换完后，Caps Lock按键会闪烁该设定值数字的次数。
- 只有Profile 2~6才可以进行Macro设定。

清除单一个设定党的Macro设定

任一个Windows键+空格键3秒

Ducky Macro

基本快捷键功能

宏执行状况选项

Fn +	Q	=	按1下后执行1次宏
	W		按1次后持续执行宏，直到按下第2次按键才停止
	E		按住按键时持续执行宏，直到放开按键才停止

- 注：执行宏过程中，若有压下其他按键时则停止原始宏之输出。

宏时间记录选项

Fn +	1	=	0.02s
	2		0.1s
	3		0.2s
	4		0.4s
	5		0.8s
	6		1s

- 注：宏默认输入会以用户打字的时间进行记录储存。

Macro开启/跳出录制快捷键：按住Fn + Ctrl 3秒

多媒体键功能设定

除了更换字符与宏输出外，Ducky针对每个按键再提供更多选项，包含了多媒体键与鼠标功能等24种多媒体功能设定。设定只要输入下方表格组合键，即可设定完成。

Fn + Windows键 + 下方按键			
A	音量静音	M	搜寻
B	音量变大	N	上一页
C	音量变小	O	下一页
D	播放 / 暂停	P	鼠标左键
E	停止	Q	鼠标右键
F	下一首	R	鼠标中键
G	上一首	S	鼠标游标向上
H	计算器	T	鼠标游标向下
I	我的计算机	U	鼠标游标向左
J	浏览器首页	V	鼠标游标向右
K	邮件	W	鼠标滚轮向上卷动
L	多媒体程序	X	鼠标滚轮向下卷动



- 注：由于英文字母在不同语言配置略有差异，此设定以美规配置为主，详细请参考图示。

- 注：此为Ducky Macro V2.0新增功能

Windows

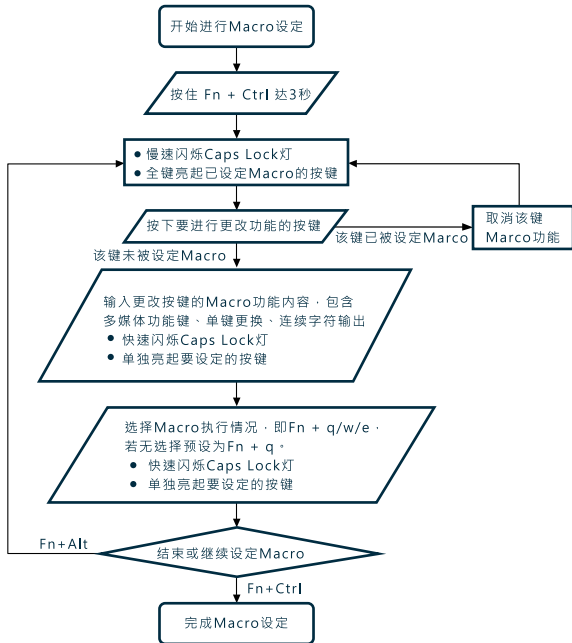
常见功能快捷键

除了提供多媒体功能设定外，PC操作快捷功能键可以透过Windows组合键的方式来完成，在此仅提供一些常用的快捷功能键提供参考，若想要详细内容可以参考Microsoft网站的信息。

Windows常见功能快捷键			
Ctrl + C	复制选取的项目	Windows鍵 + D	显示桌面
Ctrl + X	剪下选取的项目	Windows鍵 + M	将所有窗口最小化
Ctrl + V	贴上选取的项目	Windows鍵 + L	锁定计算机或切换用户
Ctrl + Z	复原动作	Windows鍵 + R	开启 [执行] 对话框
Ctrl + Y	重做动作	Windows鍵 + F	搜寻档案或文件夹
Ctrl + N	建立新文件	Windows鍵 + ↑	最大化窗口
Ctrl + O	开启现有的文件	Windows鍵 + ↓	最小化窗口
Ctrl + S	储存文件的变更	Windows鍵 + ←	将窗口最大化到屏幕左侧
Ctrl + P	打印文件	Windows鍵 + →	将窗口最大化到屏幕右侧
Alt + F4	关闭使用的程序	Windows鍵 + Home	最小化活动窗口之外的所有窗口

- <http://windows.microsoft.com/en-us/windows/keyboard-shortcuts>

Ducky Macro (宏)设定逻辑图



Ducky Macro 使用范例

[范例A]：想要将Z设定成Q输出

操作方式：按住Fn + Ctrl 3秒钟 → 按下Z → 按下Q → Fn + Ctrl

[范例B]：想要按下Fn + A后连续输出文字「Ducky」直到用户放开按键才停止动作

操作方式：按住Fn + Ctrl 3秒钟 → 按下Fn + A → 输入文字Ducky → Fn + E → Fn + Ctrl

[范例C]：想要将Q设定输出文字「key」，但希望每个字母输出的时间间隔约0.2秒

操作方式：按住Fn + Ctrl 3秒钟 → 按下Q → 输入k → Fn + 3 → 输入e → Fn + 3 → 输入y → Fn + Ctrl

[范例D]：想要将M设定成音量静音功能

操作方式：按住Fn + Ctrl 3秒钟 → 按下M → 按住Fn + Windows键 + A → Fn + Ctrl

[范例E]：在Windows系统下，想要按下F1就能显示桌面

操作方式：按住Fn + Ctrl 3秒钟 → 按下F1 → 按住Windows键 + D → Fn + Ctrl

注意事项：请先将配置文件设定成Profile 2~6，才可以进行Macro设定。

NOTE

Backlighting version

- Model Name: DKZE1708S
- Type: Mechanical Keyboard
- Switch: Cherry MX
- LED: Single color LED
- Keycap Material: PBT or ABS
- Legend printing: Double shot or Laser Engraved
- Dimensions: 440 x 140 x 41 mm
- Weight: 1200g
- Production: China



▲ For keyboard's specs and details, please contact our local distributors.

USB Repeat Acceleration

Note:

This feature allows users to adjust the repeat delay and repeat rate under USB. USB Repeat Acceleration may work differently in different applications. Please use a suitable setting accordingly.

USB Repeat Acceleration can only be adjusted under "Function Mode."

Fn +	F9	=	Function Mode On/Off	Must Hold for 3 sec
	F1		Repeat Delay 1x (Default)	Adjust USB Repeat Delay Time.
	F2		Repeat Delay 2x	
	F3		Repeat Delay 4x	
	F4		Repeat Delay 8x	
	F5		Repeat Rate 1x (Default)	Adjust USB Repeat Delay Time.
	F6		Repeat Rate 2x	
	F7		Repeat Rate 4x	
	F8		Repeat Rate 8x	

- Note: USB Repeat Acceleration may work differently in different applications. Please use a suitable setting accordingly.

LED Zone Customization Mode

Note:

Ducky Zero 3108 Backlighting version uses Ducky's patented backlighting memory technology. This mode provides 2 sets of memory, allowing you to customize individual key's backlighting. In addition, the customized zones be set to Breathing Mode. The keyboard can be set to exactly how users want their backlight to behave.

Fn + F11	CM1 Cycle: First step: Turn on user customized zone and brightness. Second step: Breathing of user customized zone. Third Step: Turn off CM1
Fn + F12	CM2 Cycle: First step: Turn on user customized zone and brightness. Second step: Breathing or user customized zone. Third Step: Turn off CM2
Fn + PrtSc	REC1
Fn + Pause	REC2
Caps Lock + (↑ or ↓)	Adjust Caps Lock brightness, 8 levels in total(including off)
Caps Lock + Scroll Lock	REC Over

LED Zone Customization Mode

Note:

Ducky Zero 3108 Backlighting version uses Ducky's patented backlighting memory technology. This mode provides 2 sets of memory, allowing you to customize individual key's backlighting. In addition, the customized zones be set to Breathing Mode. The keyboard can be set to exactly how users want their backlight to behave.

● Important:

- ◆ Adjust to the brightness first, then set the individual key to be set to that brightness.

● Recording steps

1. Press Fn + PrtSc to record CM1, and Press Fn + Pause to record CM2.
2. When start recording mode, Caps Lock will display the current LED brightness. The brightness can be adjusted by hitting Caps Lock + (↑ or ↓). After setting the desired brightness, hit any key on the keyboard will set that key to the selected brightness.
3. Repeating the above steps allow the user to set Ducky Zero 3108 Backlighting version different brightness to different keys. If the key have been set, press again to cancel the setting.
4. To finish recording, press REC Over (Caps Lock + Scroll Lock) function to finish recording, the brightness of the Caps Lock key is the value you set.

Note:

- ◆ Entering the recording mode will display the previously saved setting.
- ◆ If no changes are made within 30 seconds in the recording mode, the recording session will terminate without saving.
- ◆ CM1 and CM2 can be turned on along with other lighting modes. CM1 has the priority over CM2 when the zone overlaps.

Backlighting Modes

Fn + F10	First Mode:100% Full Backlight Mode
	Second Mode:Breathing Mode
	Third Mode:Raindrop Mode
	Fourth Mode:Reactive Mode
	Fifth Mode: Ripple Mode
	Sixth Mode:Backlighting Off

- All above modes can be user adjusted with the following key sequence.
 - ◆ Fn + ↑ :Increase brightness. ◆ Fn + → :Increase speed.
 - ◆ Fn + ↓ :Decrease brightness. ◆ Fn + ← :Decrease speed.
- Hold Fn + F10 for 3 seconds to turn off all backlighting(including CM1 and CM2).

DEMO Mode

This mode will not send any keycodes and will not function as a keyboard.
Please unplug and plug the keyboard to restart the keyboard in normal keyboard mode.

Hold Left Ctrl + Left +Shift + Caps Lock then plug the keyboard into power source.

Reset to Factory Defaults

Left + Windows key + Right Windows key

- Hold for 3 seconds. The keyboard's backlighting will flash 3 times to indicate the keyboard has been reset.

Windows Lock Feature

Fn + Alt + Win

- Hold for 3 seconds. The keyboard's backlighting will flash 3 times to indicate the ON/ OFF.

N-Key Rollover/ 6-Key Rollover

Fn + Alt + N	N-Key Rollover(default)
Fn + Alt + 6(main pad)	6-Key Rollover

- Hold for 3 seconds, the keyboard's backlighting will flash 3 times and turn to N-Key Rollover/ 6-Key Rollover.

Ducky Macro V2.0

Features:

- 1 default keyboard function, 5 custom sets for customize setting (Profile)
- Set of keys (2 layers)
 - ◆ Default layer
 - ◆ Fn layer
- Keys can be set
 - ◆ Multimedia function
 - ◆ Keycode change
 - ◆ Macro output
 - Time record:
 - ▲ Show the original status when user PRESS it
 - ▲ Add time interval manually
 - Implementation:
 - ▲ When the key PRESS, start to run Macro
 - ▲ PRESS to insert Macro repeatedly until PRESS again to stop
 - ▲ Repeat to insert Macro while PRESS the key

Unable to set Macro function:

- Fn
- Fn + ESC
- Fn + F1~F12
- Fn + Print Screen
- Fn + Scroll Lock
- Fn + Pause
- Fn + 0~9
- Fn + Ctrl
- Fn + Alt
- Fn + windows
- Fn + ↑ ↓ ← →
- Fn + Space

Ducky Macro hotkeys function

Switch profiles

Fn +	1	=	Switch to profile 1	Default Key function (Default)
	2		Switch to profile 2	Customize Macro Key Features
	3		Switch to profile 3	
	4		Switch to profile 4	
	5		Switch to profile 5	
	6		Switch to profile 6	

- Lighting effects: After the configuration, the Caps Lock key will start flashing the value number that you configured.
- Only Profile 2~6 can be set for Macro.

Reset Macro setting for single profile

US ANSI & EU ISO Layout	HOLD Any Windows key + Spacebar for 3 seconds
JP JIS Layout	HOLD Left Windows key + Spacebar for 3 seconds

Ducky Macro hotkeys function

Macro implementation option

Fn +	Q	=	When the key PRESS, start to run Macro
	W		PRESS to insert Macro repeatedly until PRESS again to stop
	E		Repeat to insert Macro while PRESS the key

Macro Record Option

Fn +	1	=	0.02s
	2		0.1s
	3		0.2s
	4		0.4s
	5		0.8s
	6		1s

Note: Default Macro function will be based on the user's typing speed and will record it.

- Macro Open/ Shortcut keys recording: Hold Fn + Ctrl for 3 sec.

Multimedia function keys

In addition to replace the character with the Macro output outside, Ducky offer more options for each button, including multimedia and mouse function keys that up to 24 different kinds of multimedia features. Enter the button below to set key combination to activate the function.

Fn + Windows key + Keys below			
A	Mute	M	Search
B	Volume up	N	Previous page
C	Volume down	O	Next page
D	Play/ Pause	P	Mouse Left Click
E	Stop	Q	Mouse Right Click
F	Next track	R	Mouse Middle Click
G	Previous track	S	Mouse Cursor Up
H	Calculator	T	Mouse Cursor Down
I	My computer	U	Mouse Cursor Left
J	Browser	V	Mouse Cursor Right
K	Mail	W	Mouse Scroll Up
L	Multimedia	X	Mouse Scroll Down



- Note: It might be slightly different configuration of layout due to different languages, and this is based on US ANSI layout for configuration.

- Note: This is Ducky Macro V2.0 new features.

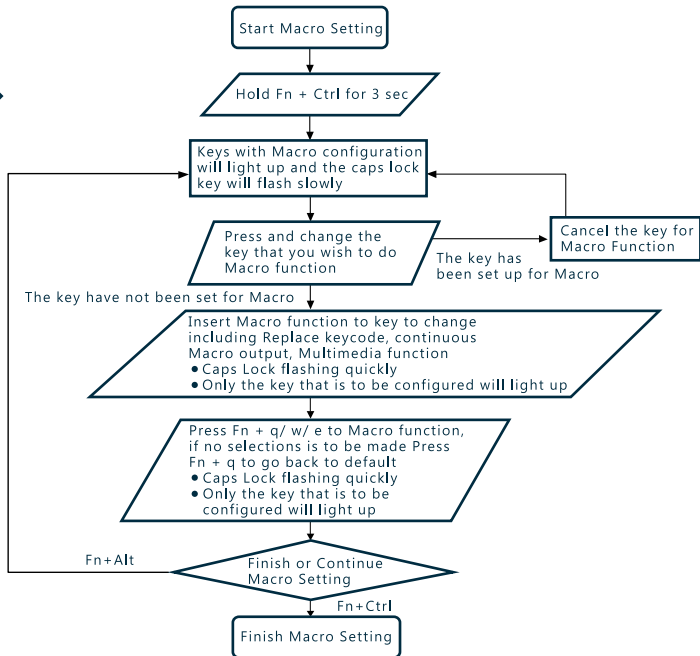
Windows common function keys

Hotkeys can be used in conjunction with combination of windows keys to complete a task. This is a reference to the most used hotkeys only, please visit Microsoft website for more detail.

Windows common function keys			
Ctrl + C	Copy select item	Windows + D	Desktop
Ctrl + X	Cut select item	Windows + M	Minimized all windows
Ctrl + V	Paste select item	Windows + L	Lock computer or change user
Ctrl + Z	Undo	Windows + R	Open [RUN] window
Ctrl + Y	Redo	Windows + F	Search files or folders
Ctrl + N	Open new file	Windows + ↑	Maximized all windows
Ctrl + O	Open current file	Windows + ↓	Minimized windows
Ctrl + S	Save file change	Windows + ←	Maximized window to the left side
Ctrl + P	Print file	Windows + →	Maximized window to the right side
Alt + F4	Quit the software	Windows + Home	Minimized all windows other than the one used

- <http://windows.microsoft.com/en-us/windows/keyboard-shortcuts>

Ducky Macro Implication Diagram



Ducky Macro working example

[Example A]: Configure the key "Z" to "Q" output
Steps: Hold Fn + Ctrl for 3 sec → Press Z → Press Q → Press Fn + Ctrl

[Example B]: Press Fn + A to insert 「Ducky」 repeatedly until released the key to stop
Steps: Hold Fn + Ctrl for 3 sec → Press Fn + A → Insert Ducky → Press Fn + E → Press Fn + Ctrl

[Example C]: Configure the key "Q" to output word 「key」 while giving a time interval of 0.2 sec
Steps: Hold Fn + Ctrl for 3 sec → Press Q → Insert k → Press Fn + 3 → Insert e → Press Fn + 3 → Insert y → Press Fn + Ctrl

[Example D]: Press F5 to mute the volume, under Windows system
Steps: Hold Fn + Ctrl for 3 sec → Press F5 → Press Fn + Windows key + A → Press Fn + Ctrl

[Example E]: Press F1 to show Desktop, under Windows system
Steps: Hold Fn + Ctrl for 3 sec → Press F1 → Hold Windows key + D → Press Fn + Ctrl

Note: Set the Profile from Profile 2~6 before setting Macro.

NOTE



www.duckychannel.com.tw